

59-33(1000m)  
N36 16.1 E139 37.9

FUJIOKA  
LCL 122.6

KK4-8

BS  
1458

KK4-6

HANYU  
FLT SVC 130.725  
60-21(650m)  
N36 11.8 E139 36.6

4-5  
YOMIURI-KAZO  
0.775 50-44(1350m)  
N36 09.8 E139 40.4

KOGA (JGF) (H) 古河市

2000  
(All KK4 Area)

CIVIL TRAINING TESTING

北利根・AREA KANTO KOSHINETSU

TOKYO Info-1 35.75

東京アプローチ

コントロールエリア

FL240

140°00'

ATS

ATS

KK4-7

KK4-2

HOJUBANA  
30-33(1000m)  
N36 02.3 E139 48.7

SEKIYADO  
FLT SVC 130.65  
28-49(1500m)  
N36 01.1 E139 49.0

VOR/DME  
SEKIYADO  
117.0 Ch117X SYE  
N36 02.7 E139 50.4

横田レーダーアドバイザリー

サービスエリア

FL175

2000

東京 TCA

10000

4000

6000

6000

4000

SAITAMA  
さいたま市

KOSHIGAYA  
越谷市

06  
YOSHIKAWA  
吉川市

NAGAREYAMA  
流山市

BS  
KR  
954

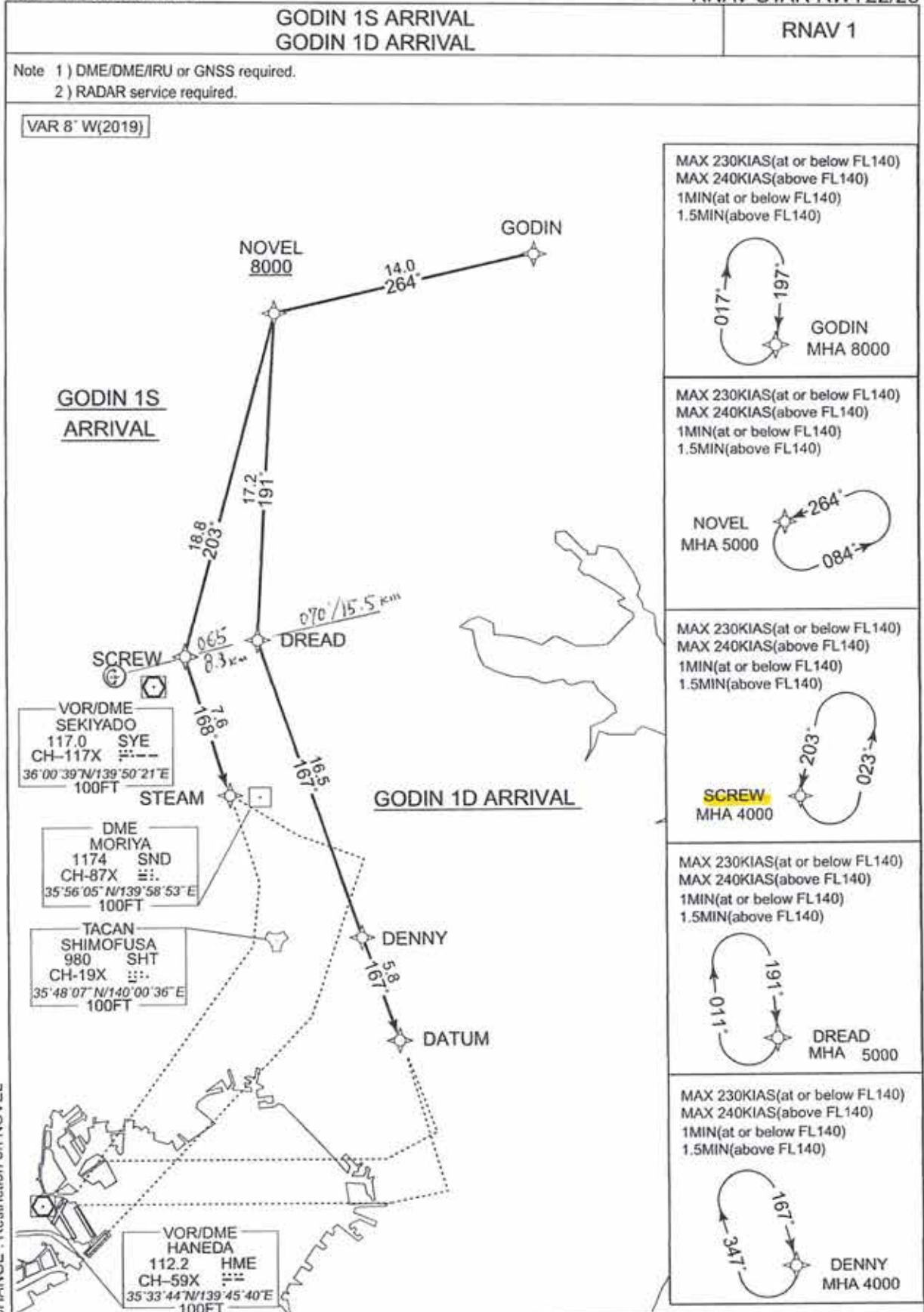
BS  
OR  
1134

BS  
TV  
98

STANDARD ARRIVAL CHART-INSTRUMENT

RJTT / TOKYO INTL

RNAV STAR RWY22/23



CHANGE : Restriction on NOVEL

STANDARD ARRIVAL CHART-INSTRUMENT

RJTT / TOKYO INTL

RNAV STAR RWY16L/16R

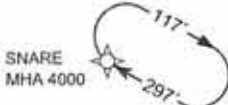
GODIN L ARRIVAL  
GODIN R ARRIVAL

RNAV 1

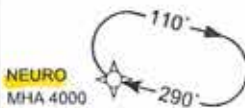
Note 1) DME/DME/IRU or GNSS required.  
2) RADAR service required.

VAR 8° W(2019)

MAX 230KIAS(at or below FL140)  
MAX 240KIAS(above FL140)  
1MIN(at or below FL140)  
1.5MIN(above FL140)



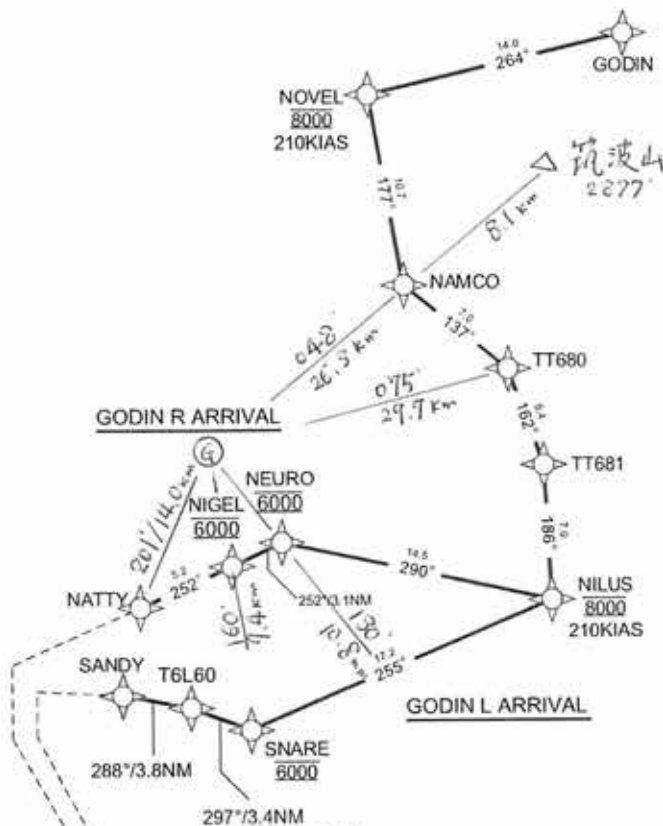
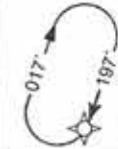
MAX 230KIAS(at or below FL140)  
MAX 240KIAS(above FL140)  
1MIN(at or below FL140)  
1.5MIN(above FL140)



MAX 230KIAS(at or below FL140)  
MAX 240KIAS(above FL140)  
1MIN(at or below FL140)  
1.5MIN(above FL140)

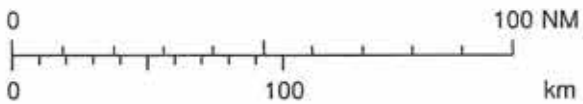
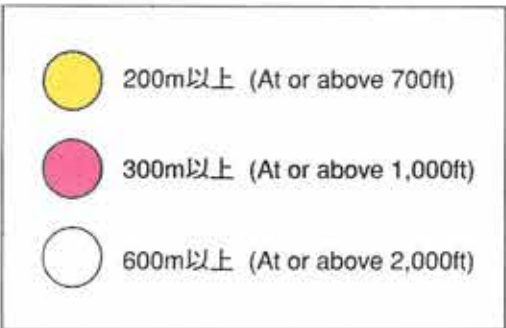


MAX 230KIAS(at or below FL140)  
MAX 240KIAS(above FL140)  
1MIN(at or below FL140)  
1.5MIN(above FL140)

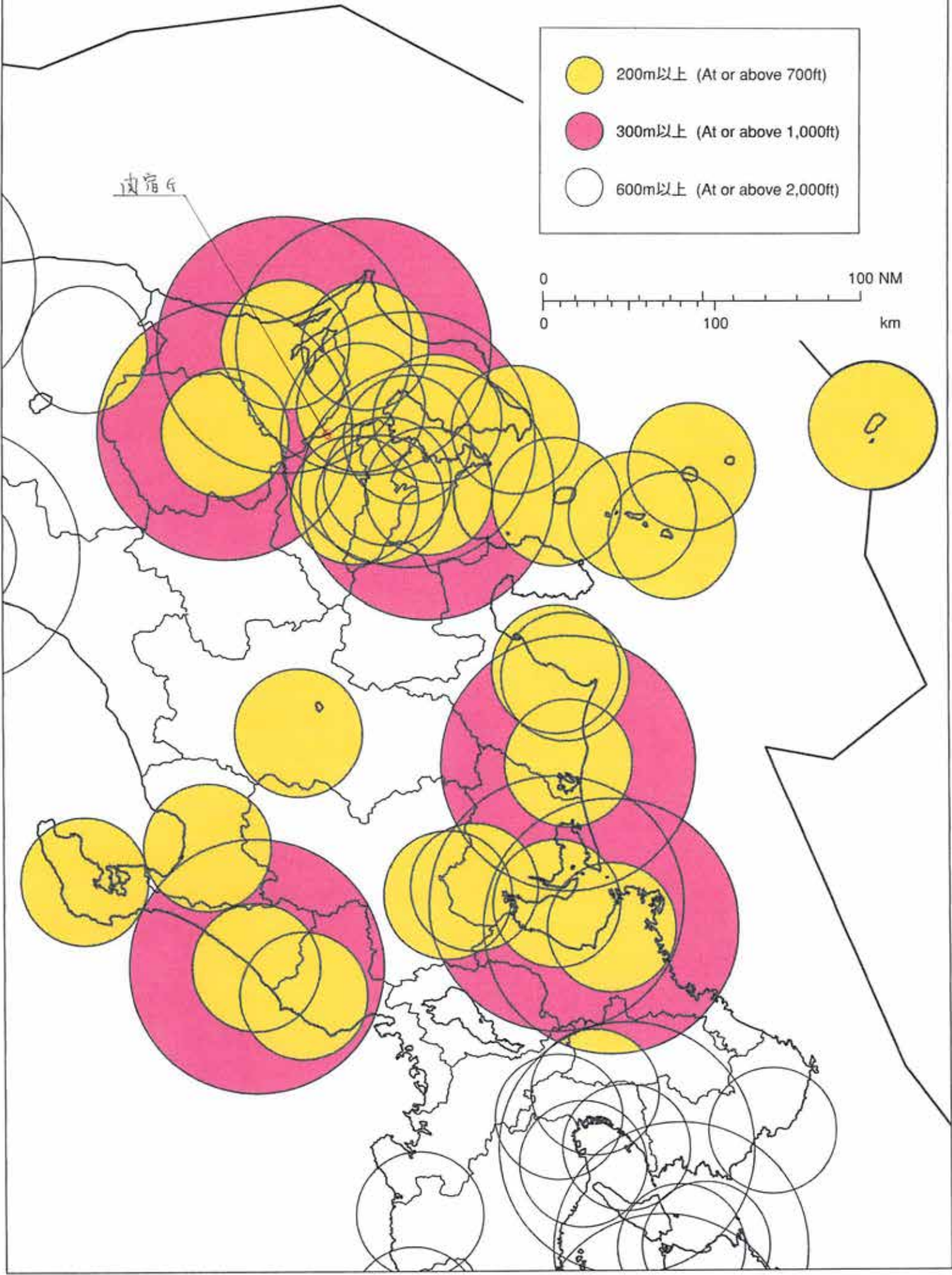


VOR/DME  
HANEDA  
112.2 HME  
CH-59X  
35°33'44"N/139°45'40"E  
100FT

CHANGE : New PROC



皮宿斤





東京ターミナルコントロールエリアのうち、次に掲げる空域をVFRにより飛行する航空機は、東京国際空港及び成田国際空港へ離着陸する航空機との輻輳が予想されることから、積極的に東京TCAアドバイザーの提供を受けること。

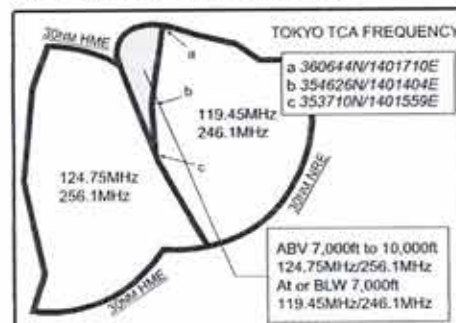
1. 富津岬付近の空域
2. 東京国際空港北側の空域
3. 成田国際空港北側の空域（特に百里進入管制区及び霞ヶ浦管制圏付近）

0600UTCから1000UTCを除き、東京ターミナルコントロールエリアの一部は以下のとおりとする。  
EXCEPT 0600UTC TO 1000UTC, PART OF TOKYO TERMINAL CONTROL AREA IS AS FOLLOWS.



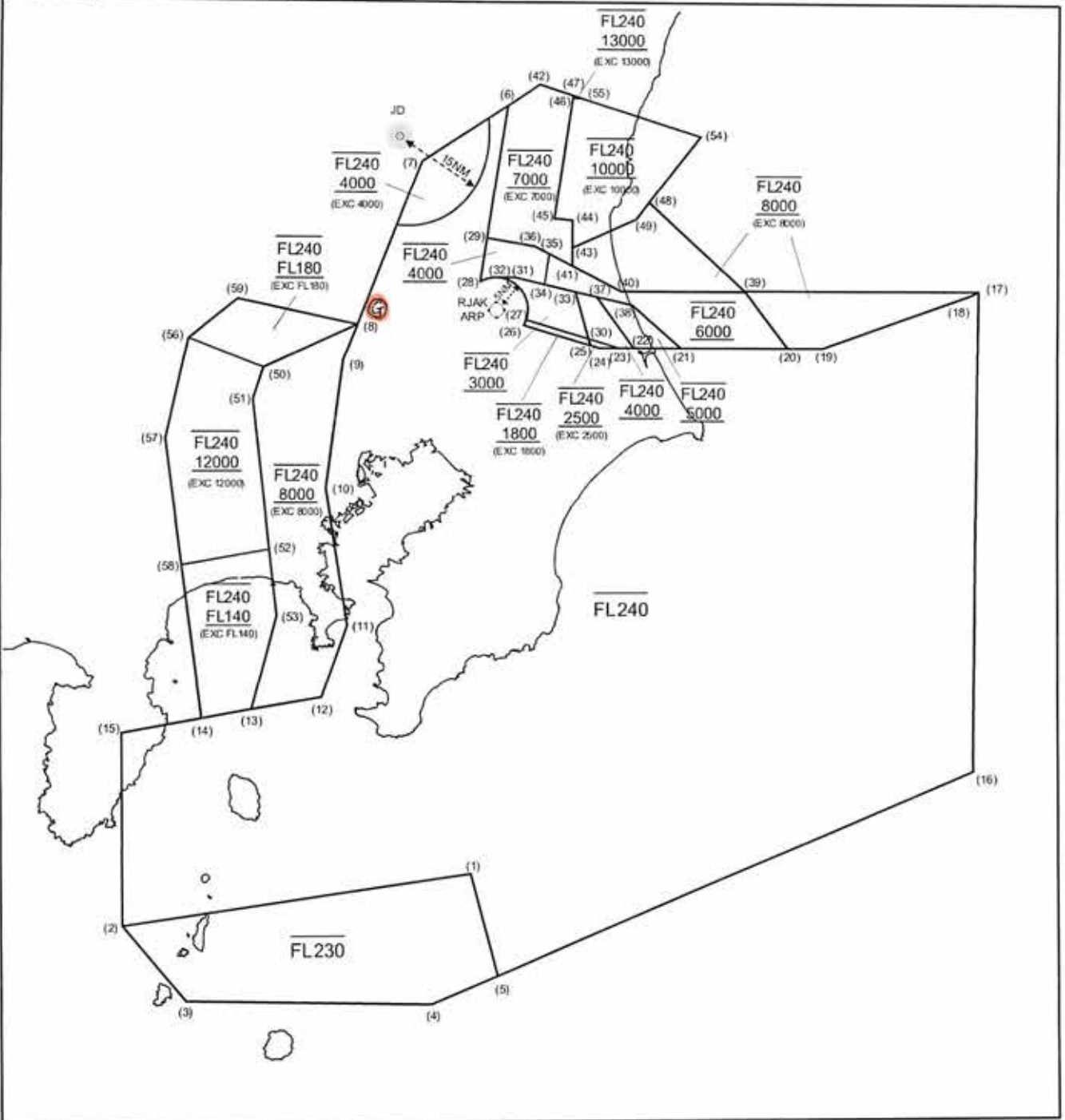
VFR AIRCRAFT ARE REQUESTED TO USE POSITIVELY TOKYO TCA ADVISORY SERVICE AROUND THE AREA LISTED BELOW WITHIN TOKYO TERMINAL CONTROL AREA.

1. AROUND CAPE FUTTSU
2. THE NORTHERN AREA OF RJTT
3. THE NORTHERN AREA OF RJAA (ESPECIALLY NEAR HYAKURI ACA AND KASUMIGAURA CTR)



東京進入管制区

Tokyo Approach Control Area

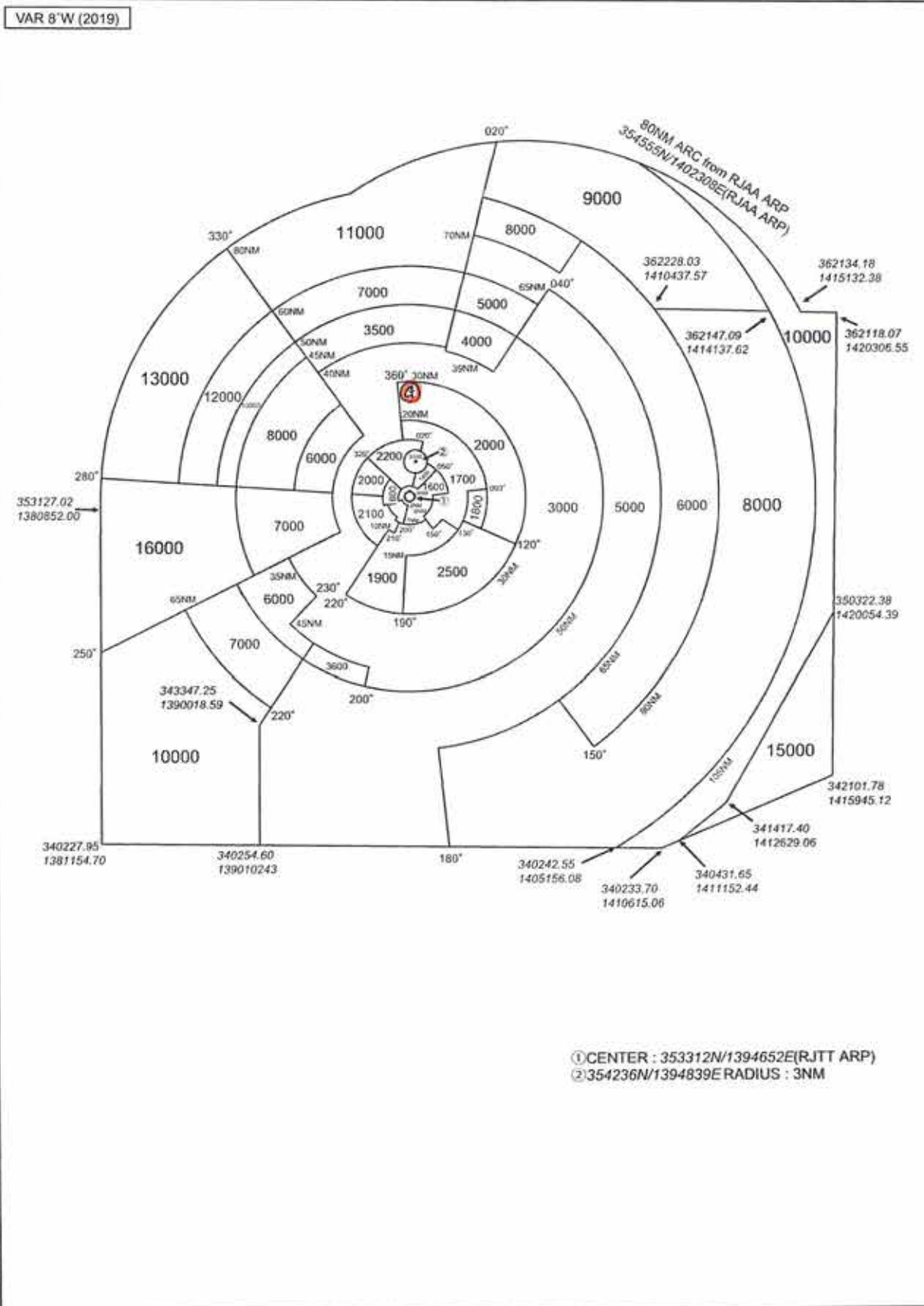


Point list

- |                       |                       |                       |                       |
|-----------------------|-----------------------|-----------------------|-----------------------|
| (1) 343224N/1400724E  | (18) 360419N/1414409E | (35) 361053N/1402147E | (52) 352343N/1392749E |
| (2) 342337N/1390033E  | (19) 355600N/1411534E | (36) 361204N/1401853E | (53) 351301N/1392926E |
| (3) 341153N/1391255E  | (20) 355600N/1410841E | (37) 360407N/1403112E | (54) 362938N/1405126E |
| (4) 341141N/1395954E  | (21) 355600N/1404746E | (38) 360250N/1403803E | (55) 363540N/1402812E |
| (5) 341614N/1401235E  | (22) 355600N/1403828E | (39) 360503N/1410017E | (56) 355626N/1390939E |
| (6) 363429N/1401317E  | (23) 355600N/1403535E | (40) 360500N/1403600E | (57) 354316N/1390433E |
| (7) 362515N/1395633E  | (24) 355600N/1403154E | (41) 360858N/1402626E | (58) 352134N/1390812E |
| (8) 355918N/1394424E  | (25) 355626N/1403002E | (42) 363752N/1401937E | (59) 360223N/1391842E |
| (9) 355339N/1394146E  | (26) 355930N/1401651E | (43) 361152N/1402623E |                       |
| (10) 353325N/1393840E | (27) 360023N/1401723E | (44) 361619N/1402619E |                       |
| (11) 351136N/1394310E | (28) 360623N/1400824E | (45) 361628N/1402245E |                       |
| (12) 350019N/1393818E | (29) 361321N/1400930E | (46) 363547N/1402606E |                       |
| (13) 345811N/1392443E | (30) 355732N/1402939E | (47) 363611N/1402610E |                       |
| (14) 345614N/1391225E | (31) 360705N/1401514E | (48) 361913N/1404125E |                       |
| (15) 345412N/1385949E | (32) 360705N/1401134E | (49) 361630N/1403849E |                       |
| (16) 344816N/1414417E | (33) 360453N/1402703E | (50) 355218N/1392608E |                       |
| (17) 360500N/1414604E | (34) 360602N/1402056E | (51) 354715N/1392411E |                       |

RJTT / TOKYO INTL

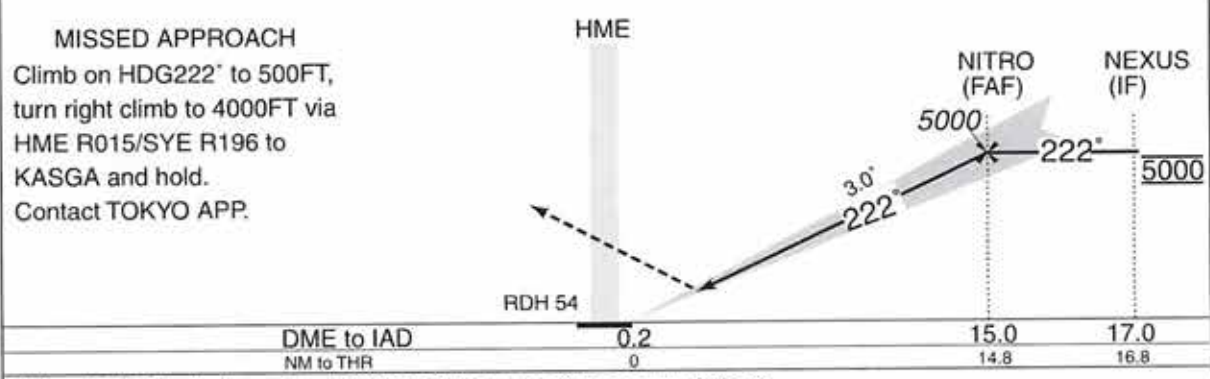
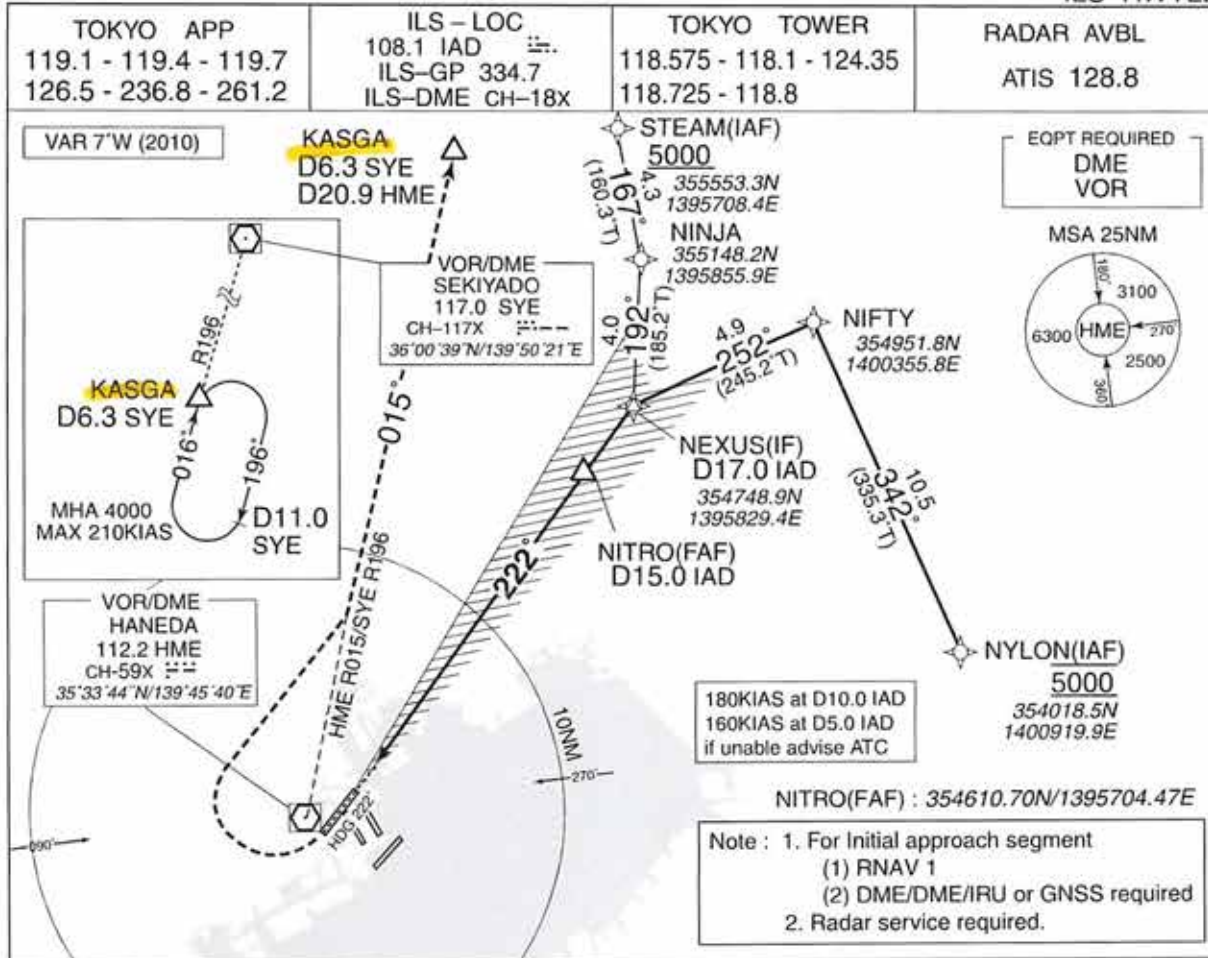
Minimum Vectoring Altitude CHART



INSTRUMENT APPROACH CHART

RJTT / TOKYO INTL

ILS RWY22



Missed APCH climb gradient MNM 6.0% due to airspace restrictions.

MINIMA	THR elev. 35	AD elev. 21		
CAT	CAT I		CIRCLING	
	DA(H)	RVR/CMV	MDA(H)	VIS
A	235 (200)	550	730 (709)	1600
B				2400
C				2400
D				3200

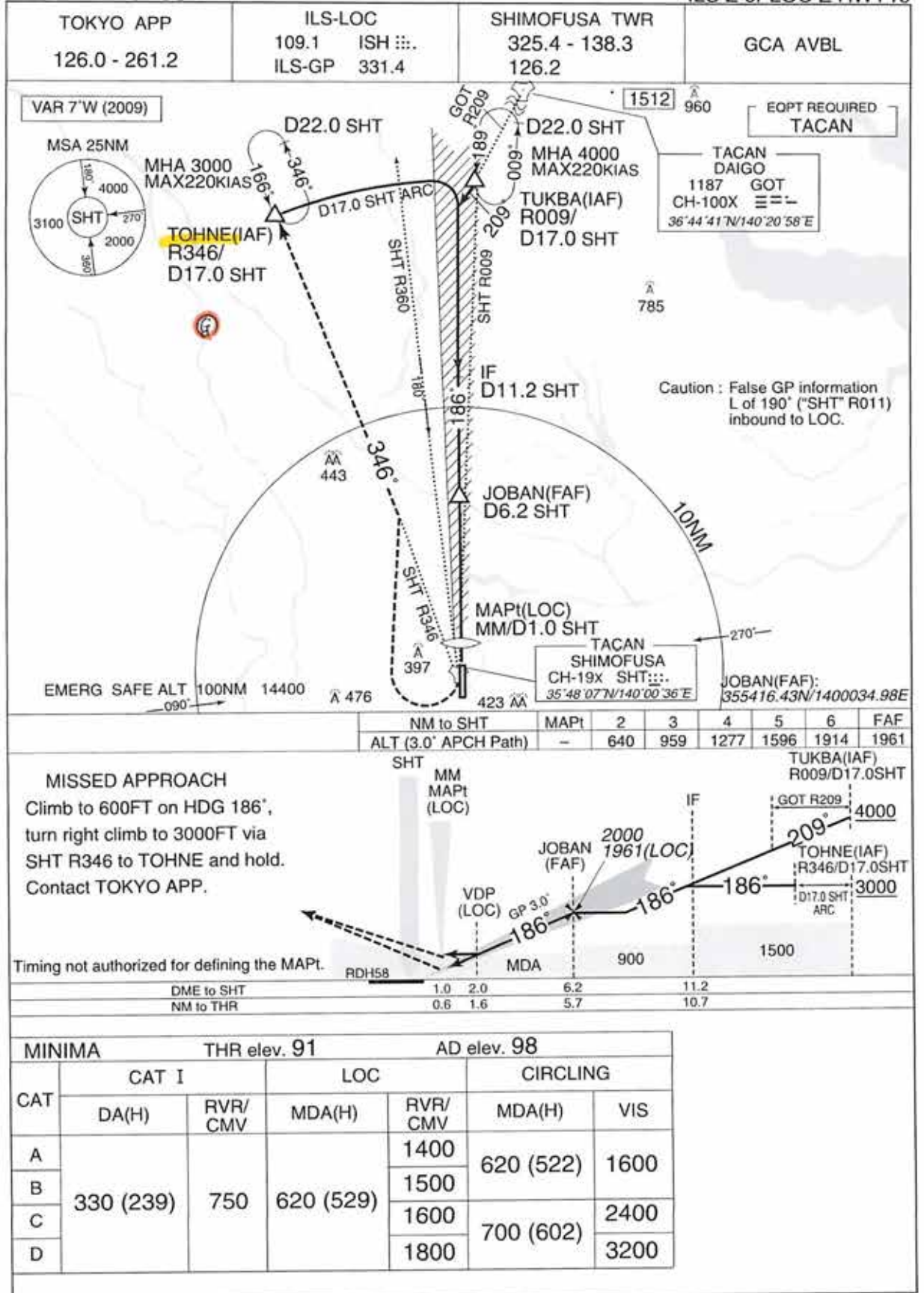
MINIMA with Missed APCH climb gradient below 6.0% are not established.  
Circling is not authorized during the night time, except counterclockwise circling to RWY16R/16L and clockwise circling to RWY23, RWY34R/34L.



INSTRUMENT APPROACH CHART

RJTL / SHIMOFUSA

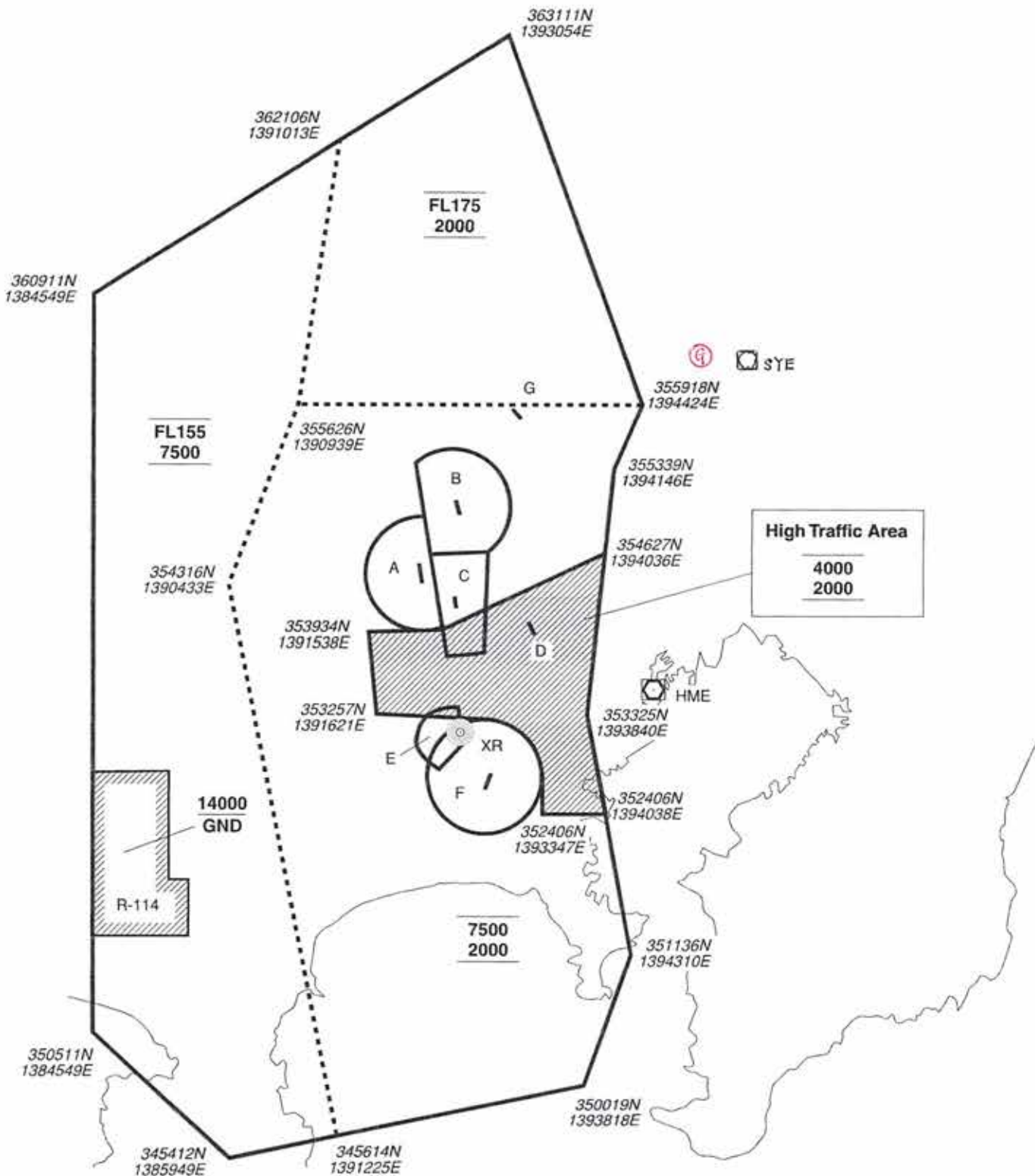
ILS Z or LOC Z RWY19



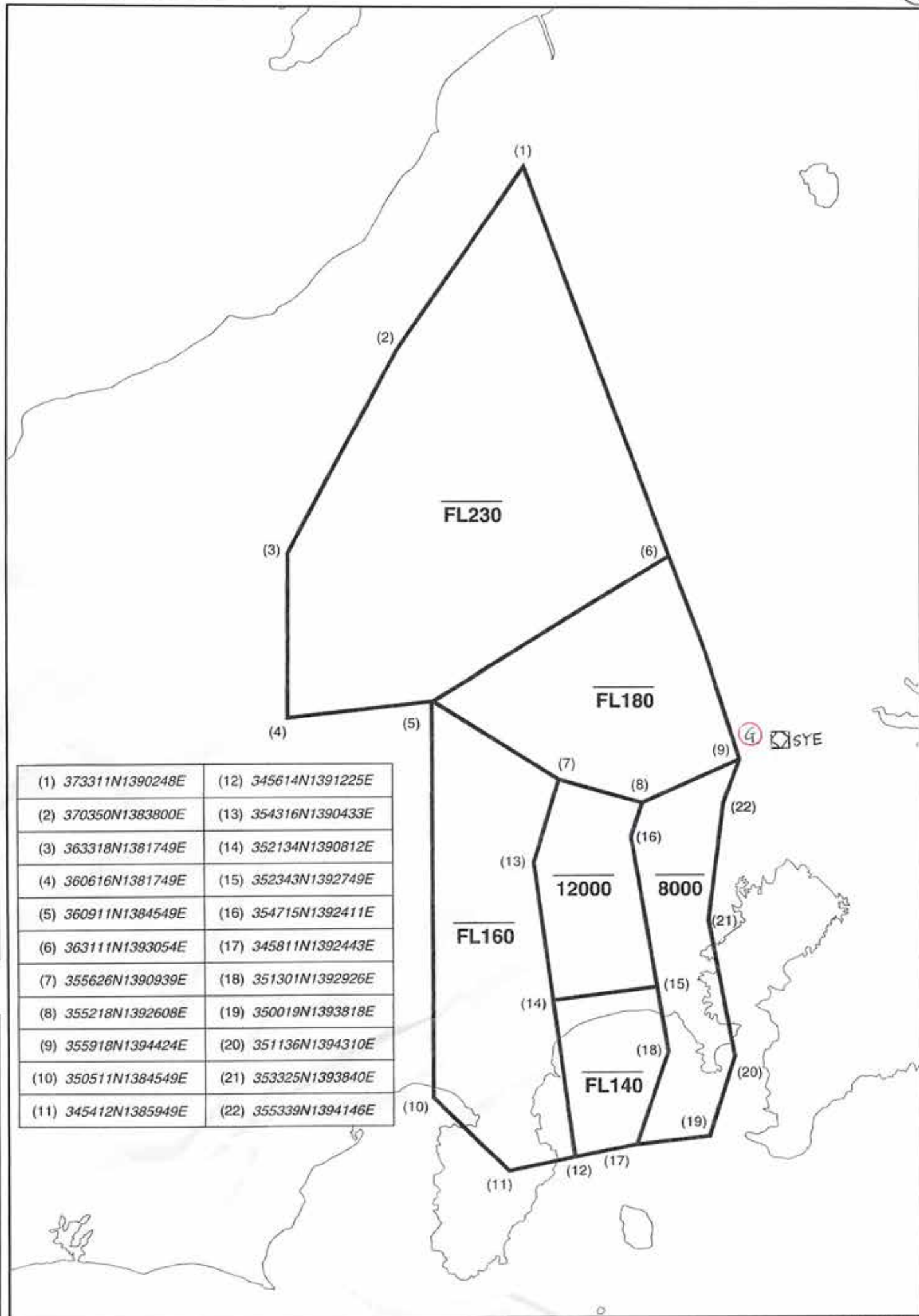
# YOKOTA VFR RADAR ADVISORY SERVICE AREA

CALL YOKOTA APPROACH CONTROL ON:

- (1) SFC to 5500: 120.7MHz
- (2) 6000 to FL175: 118.3MHz



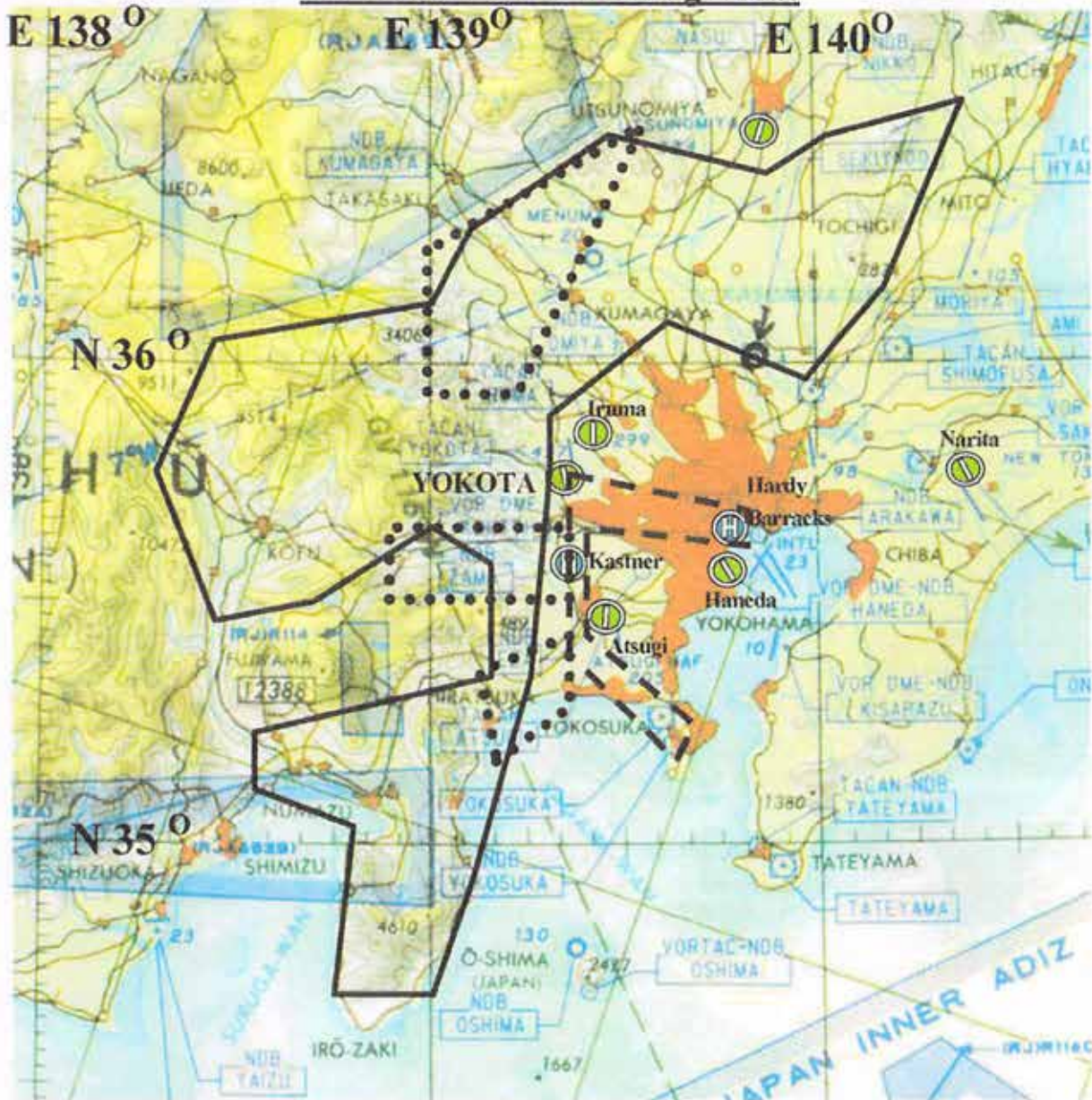
Control Zone	COM(MHz)
A. RJTY	SFC-3000 134.3
B. RJTJ	SFC-6000 122.05
C. RJTC	SFC-3000 118.85
D. RJTF	none 130.8
E. RJTR	SFC-1700 122.5
F. RJTA	SFC-6000 126.2
G. Honda	none 130.75



(1) 373311N1390248E	(12) 345614N1391225E
(2) 370350N1383800E	(13) 354316N1390433E
(3) 363318N1381749E	(14) 352134N1390812E
(4) 360616N1381749E	(15) 352343N1392749E
(5) 360911N1384549E	(16) 354715N1392411E
(6) 363111N1393054E	(17) 345811N1392443E
(7) 355626N1390939E	(18) 351301N1392926E
(8) 355218N1392608E	(19) 350019N1393818E
(9) 355918N1394424E	(20) 351136N1394310E
(10) 350511N1384549E	(21) 353325N1393840E
(11) 345412N1385949E	(22) 355339N1394146E

2010. 3.

### Yokota AB VFR Training Areas



C-130 Formation 500AGL – 5,000AGL	—————
UH-1 Formation 1,000 AGL – 1,500 AGL	- - - - -
Aero Club Training Surface – 8,500 MSL	•••••